

Multi-Stage Centrifugal Pump, Type LKH-114 Single and Flushed Shaft Seal



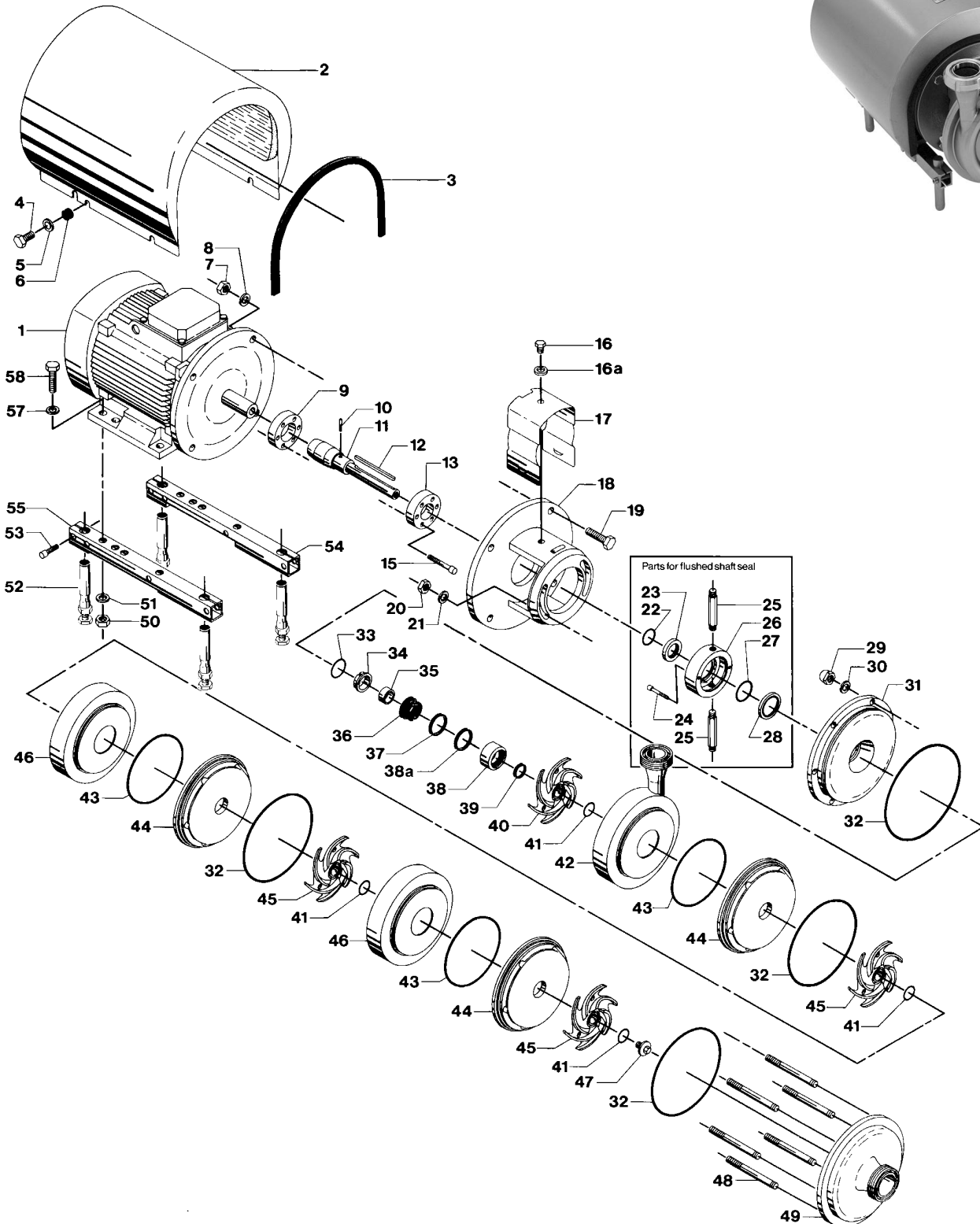
Pos.	Qty.	Denomination	3-18.5 kW	Pos.	Qty.	Denomination	3-18.5 kW	
For flushed shaft seal				Alternatives				
22	1	O-ring, EPDM	9611-99-2754	Shaft seal complete EPDM				9612-3622-04
23	1	Sleeve	9612-3629-01	33	1	O-ring, EPDM	9611-99-2727	
24	2	Screw	9611-99-0203	34	1	Stationary seal ring, Sic.	9612-3633-01	
25	2	Tube	9612-3589-01	36	1	Rotating seal ring, Sic.	9612-3634-02	
26	1	Seal housing for flushed seal	9612-3626-01	37	1	Quad ring, EPDM	9611-99-2730	
27	1	O-ring, EPDM	9611-99-2753	38a	1	Support ring	9612-4571-01	
28	1	Lip seal	9611-99-2860	39	1	Quad ring, EPDM	9611-99-2733	
				Shaft seal complete NBR				9612-3622-05
Δ	1	Shaft seal complete EPDM (standard)	9612-3622-01	33	1	O-ring, NBR	9611-99-2728	
33	1	O-ring, EPDM	9611-99-2727	34	1	Stationary seal ring, Sic.	9612-3633-01	
34	1	Stationary seal ring, Sic.	9612-3633-01	36	1	Rotating seal ring, Sic.	9612-3634-02	
36	1	Rotating seal ring, Carbon	9612-3634-01	37	1	Quad ring, NBR	9611-99-2731	
37	1	Quad ring, EPDM	9611-99-2730	38a	1	Support ring	9612-4571-01	
38a	1	Support ring	9612-4571-01	39	1	Quad ring, NBR	9611-99-2734	
39	1	Quad ring, EPDM	9611-99-2733	Shaft seal complete FPM				9612-3622-06
				33	1	O-ring, FPM	9611-99-2729	
Δ	1	Shaft seal complete NBR	9612-3622-02	34	1	Stationary seal ring, Sic.	9612-3633-01	
33	1	O-ring, NBR	9611-99-2728	36	1	Rotating seal ring, Sic.	9612-3634-02	
34	1	Stationary seal ring, Sic.	9612-3633-01	37	1	Quad ring, FPM	9611-99-2732	
36	1	Rotating seal ring, Carbon	9612-3634-01	38a	1	Support ring	9612-4571-01	
36	1	Rotating seal ring, Carbon	9612-3634-01	39	1	Quad ring, FPM	9611-99-2735	
37	1	Quad ring, NBR	9611-99-2731					
37	1	Quad ring, FPM	9611-99-2732					
38a	1	Support ring	9612-4571-01					
39	1	Quad ring, NBR	9611-99-2734					
Δ	1	Shaft seal complete FPM	9612-3622-03					
33	1	O-ring, FPM	9611-99-2729					
34	1	Stationary seal ring, Sic.	9612-3633-01					
36	1	Rotating seal ring, Carbon	9612-3634-01					
37	1	Quad ring, FPM	9611-99-2732					
38a	1	Support ring	9612-4571-01					
39	1	Quad ring, FPM	9611-99-2735					
Service kit for single shaft seal								
Δ		Service kit, EPDM	9611-92-2102					
Δ		Service kit, NBR	9611-92-2103					
Δ		Service kit, FPM	9611-92-2104					
Service kit for flushed shaft seal								
○		Service kit, EPDM	9611-92-2105					
○		Service kit, NBR	9611-92-2106					
○		Service kit, FPM	9611-92-2107					
Parts marked with Δ/○ are included in the service kits.								
Conversion kit single to flushed shaftseal 9611-92-2138 = Pos. 10+22+23+24+25+26+27+28								

Recommended Spare Parts: Service kits.

Pos.	Qty.	Denomination	3 kW	4 kW	5.5 kW	7.5 kW	11 kW	15 kW	18.5 kW
1	1	Motor 220/240 VD	31801-1984-1	9612-4028-07	9612-4028-15	9612-4028-30	31801-0122-1	31801-1194-1	9612-3454-13
	1	Motor 380/420 VD	31801-1984-2	9612-4028-09	9612-4028-17	9612-4028-32	31801-0122-3	31801-1194-3	9612-3454-14
	1	*Special motor 220/240 VD		9612-4189-07	9612-4189-09	9612-4189-11	9612-4189-13	9612-4189-15	9612-4189-17
	1	*Special motor 380/420 VD		9612-4189-08	9612-4189-10	9612-4189-12	9612-4189-14	9612-4189-16	9612-4189-18
2	1	Shroud complete	9612-1390-02	9612-1390-03	9612-1390-08	9612-1390-08	9612-1390-05	9612-1390-05	9612-1390-05
3	1	Edge list (Included in pos. 2)	9612-1338-02	9612-1338-03	9612-1338-04	9612-1338-04	9612-1338-05	9612-1338-05	9612-1338-05

* For system pressure 10-40 bar.

Multi-Stage Centrifugal Pump, Type LKH-114
Single and Flushed Shaft Seal



Multi-Stage Centrifugal Pump, Type LKH-114 Single and Flushed Shaft Seal



Pos.	Qty.	Denomination	5.5-7.5 kW	11-18.5 kW
4	4	Screw	9611-99-1824	9611-99-1176
5	4	Washer	9611-99-1831	9611-99-1831
6	4	Spacing sleeve	9611-99-2737	31438-0390-2
7	4	Nut for adaptor	9611-99-0587	9611-99-2160
8	4	Washer for adaptor	9611-99-0676	9611-99-1886
9	1	Compression ring with thread	9612-1336-05	9612-1336-03
10	1	Connex pin for flushed shaft seal	9611-99-0622	9611-99-0622
11	1	Shaft for single shaft seal	9612-3620-03	9612-3621-06
	1	Shaft with pin (pos.10) for flushed shaft seal	9612-3620-06	9612-3621-06
12	1	Key	9611-99-2758	9611-99-2758
13	1	Compression ring without thread	9612-1337-05	9612-1337-03
15	6	Screw	9611-99-3197	9611-99-3198
15a	6	Washer	9611-99-3199	9611-99-3199
16	1	Screw for adaptor guard	9611-99-2258	9611-99-2258
16a	1	Washer	9611-99-0757	9611-99-0757
17	1	Adaptor guard	9612-1311-07	9612-1311-08
18	1	Adaptor	9612-3425-01	9612-3426-01
19	4	Screw for adaptor	9611-99-2162	9611-99-2163
20	2	Nut	9611-99-0353	9611-99-0353
21	2	Washer	9611-99-2559	9611-99-2559
29	6	Cap nut	9611-99-2593	9611-99-2593
30	6	Washer	9611-99-1887	9611-99-1887
31	1	Back plate (LKH-114 0-10 bar)	9612-3892-08	9612-3892-08
	1	Back plate (LKH-114/P 10-40 bar)	9612-3892-14	9612-3892-14
32ΔO	4	O-ring, EPDM (standard)	9611-99-2744	9611-99-2744
	4	O-ring, NBR	9611-99-2745	9611-99-2745
	4	O-ring, FPM	9611-99-2746	9611-99-2746
35	1	Spacing ring	9612-3625-01	9612-3625-01
38	1	Rotating seal housing	9612-3624-01	9612-3624-01
40	1	Impeller	9612-3604-01	9612-3604-01
41ΔO	4	O-ring, EPDM (standard)	9611-99-2750	9611-99-2750
	4	O-ring, NBR	9611-99-2751	9611-99-2751
	4	O-ring, FPM	9611-99-2752	9611-99-2752
42	1	Pump casing, IDF	9612-3889-01	9612-3889-01
	1	Pump casing, SMS	9612-3889-02	9612-3889-02
	1	Pump casing, DIN	9612-3889-03	9612-3889-03
	1	Pump casing, ISO	9612-3889-04	9612-3889-04
	1	Pump casing, BS	9612-3889-05	9612-3889-05
	1	Pump casing, flange DN40	9612-3894-01	9612-3894-01
43ΔO	3	O-ring, EPDM (standard)	9611-99-2747	9611-99-2747
	3	O-ring, NBR	9611-99-2748	9611-99-2748
	3	O-ring, FPM	9611-99-2749	9611-99-2749
44	3	Guide vanes	9612-3613-01	9612-3613-01
45	3	Impeller	9612-3605-01	9612-3605-01
46	2	Intermediate casing	9612-3610-01	9612-3610-01
47	1	Impeller screw	9612-3627-01	9612-3627-01
48	6	Bolt	9612-3635-03	9612-3635-03
49	1	Pump cover, IDF	9612-3893-01	9612-3893-01
	1	Pump cover, SMS	9612-3893-02	9612-3893-02
	1	Pump cover, DIN	9612-3893-03	9612-3893-03
	1	Pump cover, ISO	9612-3893-04	9612-3893-04
	1	Pump cover, BS	9612-3893-05	9612-3893-05
	1	Pump cover, flange DN50	9612-3895-01	9612-3895-01

Legs				
50	4	Nut	9611-99-0353	9611-99-0587
51	4	Spring washer	9611-99-1887	9611-99-0676
52	4	Leg	9612-3967-01	9612-3967-01
53	4	Screw (Period 9711-)	9611-99-0273	9611-99-0273
	4	Screw (Period -9711)	9611-99-1907	9611-99-1907
54	1	Support bar, left	9612-1323-06	9612-1323-03
55	1	Support bar, right	9612-1322-06	9612-1322-03
57	4	Washer	9611-99-0786	9611-99-0706
58	4	Screw	9611-99-1911	9611-99-1834

Pos.	Qty.	Denomination	5.5-18.5 kW
Parts for flushed shaft seal			
22O	1	O-ring, EPDM	9611-99-2754
23	1	Sleeve	9612-3629-01
24	2	Screw	9611-99-0203
25	2	Tube	9612-3589-01
26	1	Seal housing for flushed seal	9612-3626-01
27O	1	O-ring, EPDM	9611-99-2753
28O	1	Lip seal	9611-99-2860

ΔO		Shaft seal complete EPDM (standard)	9612-3622-01
33	1	O-ring, EPDM	9611-99-2727
34	1	Stationary seal ring, Sic.	9612-3633-01
36	1	Rotating seal ring, Carbon	9612-3634-01
37	1	Quad ring, EPDM	9611-99-2730
38a	1	Support ring, PTFE	9612-4571-01
39	1	Quad ring, EPDM	9611-99-2733

ΔO		Shaft seal complete NBR	9612-3622-02
33	1	O-ring, NBR	9611-99-2728
34	1	Stationary seal ring, Sic.	9612-3633-01
36	1	Rotating seal ring, Carbon	9612-3634-01
37	1	Quad ring, NBR	9611-99-2731
38a	1	Support ring, PTFE	9612-4571-01
39	1	Quad ring, NBR	9611-99-2734

ΔO		Shaft seal complete FPM	9612-3622-03
33	1	O-ring, FPM	9611-99-2729
34	1	Stationary seal ring, Sic.	9612-3633-01
36	1	Rotating seal ring, Carbon	9612-3634-01
37	1	Quad ring, FPM	9611-99-2732
38a	1	Support ring, PTFE	9612-4571-01
39	1	Quad ring, FPM	9611-99-2735

Service kit for single shaft seal			
Δ		Service kit, EPDM	9611-92-2108
Δ		Service kit, NBR	9611-92-2109
Δ		Service kit, FPM	9611-92-2110

Service kit for flushed shaft seal			
O		Service kit, EPDM	9611-92-2111
O		Service kit, NBR	9611-92-2112
O		Service kit, FPM	9611-92-2113

Parts marked with Δ/O are incl. in the service kits.

Conversion kit single to flushed shaft seal 9611-92-2138 = Pos. 10+22+23+24+25+26+27+28

Recommended Spare Parts: **Service kits.**

Pos.	Qty.	Denomination	5.5 kW
1	1	Motor 220/240 VD	9612-4028-15
	1	Motor 380/420 VD	9612-4028-17
	1	*Special motor 220/240 VD	9612-4189-09
	1	*Special motor 380/420 VD	9612-4189-10
2	1	Shroud complete	9612-1390-08
3	1	Edge list (Included in pos. 2)	9612-1338-04

* For system pressure 10-40 bar.

Multi-Stage Centrifugal Pump, Type LKH-114 Single and Flushed Shaft Seal



Pos. Qty. Denomination **5.5-18.5 kW**

Alternatives

Shaft seal complete EPDM (standard).....		9612-3622-04
33	1 O-ring, EPDM.....	9611-99-2727
34	1 Stationary seal ring, Sic.	9612-3633-01
36	1 Rotating seal ring, Sic.	9612-3634-02
37	1 Quad ring, EPDM	9611-99-2730
38a	1 Support ring, PTFE	9612-4571-01
39	1 Quad ring, EPDM	9611-99-2733
Shaft seal complete NBR		9612-3622-05
33	1 O-ring, NBR.....	9611-99-2728
34	1 Stationary seal ring, Sic.	9612-3633-01
36	1 Rotating seal ring, Sic.	9612-3634-02
37	1 Quad ring, NBR	9611-99-2731
38a	1 Support ring, PTFE	9612-4571-01
39	1 Quad ring, NBR	9611-99-2734
Shaft seal complete FPM.....		9612-3622-06
33	1 O-ring, FPM.....	9611-99-2729
34	1 Stationary seal ring, Sic.	9612-3633-01
36	1 Rotating seal ring, Sic.	9612-3634-02
37	1 Quad ring, FPM	9611-99-2732
38a	1 Support ring, PTFE	9612-4571-01
39	1 Quad ring, FPM	9611-99-2735

Pos.	Qty.	Denomination	5.5 kW	7.5 kW	11 kW	15 kW	18.5 kW
1	1	Motor 220/240 VD	9612-4028-15	9612-4028-30	31801-0122-1	31801-1194-1	9612-3454-13
	1	Motor 380/420 VD	9612-4028-17	9612-4028-32	31801-0122-3	31801-1194-3	9612-3454-14
	1	*Special motor 220/240 VD	9612-4189-09	9612-4189-11	9612-4189-13	9612-4189-15	9612-4189-17
	1	*Special motor 380/420 VD	9612-4189-10	9612-4189-12	9612-4189-14	9612-4189-16	9612-4189-18
2	1	Shroud complete	9612-1390-08	9612-1390-08	9612-1390-05	9612-1390-05	9612-1390-05
3	1	Edge list (Included in pos. 2)	9612-1338-04	9612-1338-04	9612-1338-05	9612-1338-05	9612-1338-05

* For system pressure 10-40 bar.